

## SOUTH HEDLAND COURT

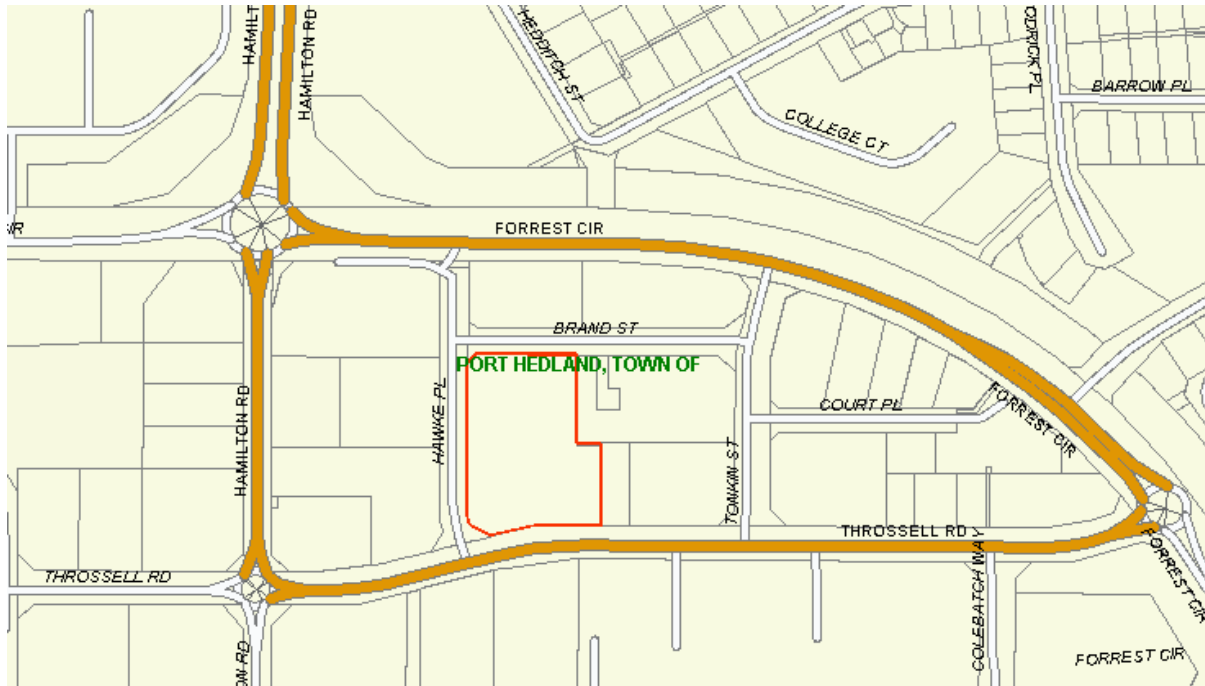
**Address:** Hawke Place STH HEDLAND 6722

**Contact Details:**

Telephone: (08) 9172 9300

Fascimile: (08) 9172 9330

Email: [southhedlandcourt@justice.wa.gov.au](mailto:southhedlandcourt@justice.wa.gov.au)



**Parking Availability:**

Limited parking is available at the courthouse

**Assembly Instructions:**

Jurors are requested to present at the front counter upon arrival.

**Facilities:** If selected on a jury panel tea and coffee facilities will be available.

**Food:**

A number of lunch options are available on Throssell Road.