

## GERALDTON COURT

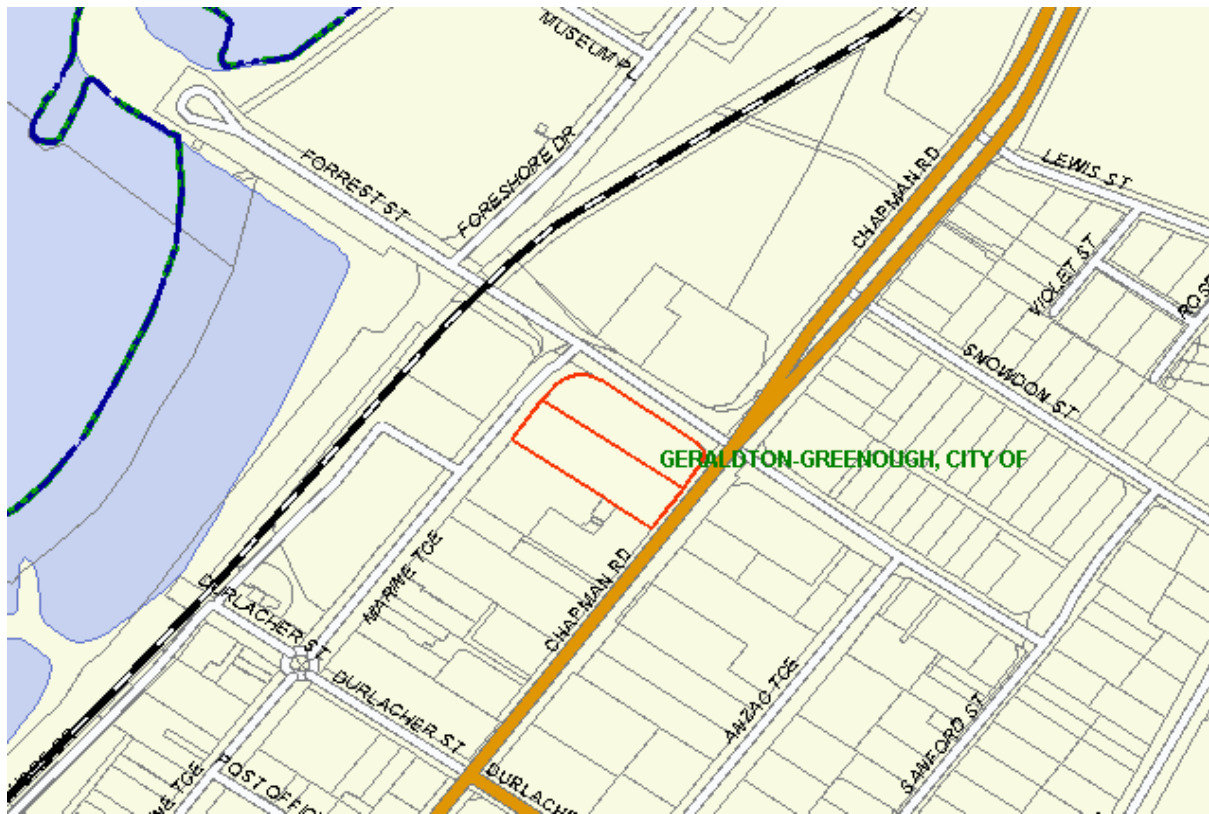
**Address:** Marine Terrace GERALDTON 6530

### Contact Details:

Telephone: (08) 9921 3722

Facsimile: (08) 9964 1864

Email: [geraldtoncourt@justice.wa.gov.au](mailto:geraldtoncourt@justice.wa.gov.au)



### Parking Availability:

Parking is available opposite the court house. Entry is via Foreshore Drive.

### Assembly Instructions:

Jurors are requested to assemble outside court three.

### Facilities:

Tea, coffee and fridge facilities are available at the court.

### Food:

A number of lunch options are available on Marine Terrace.